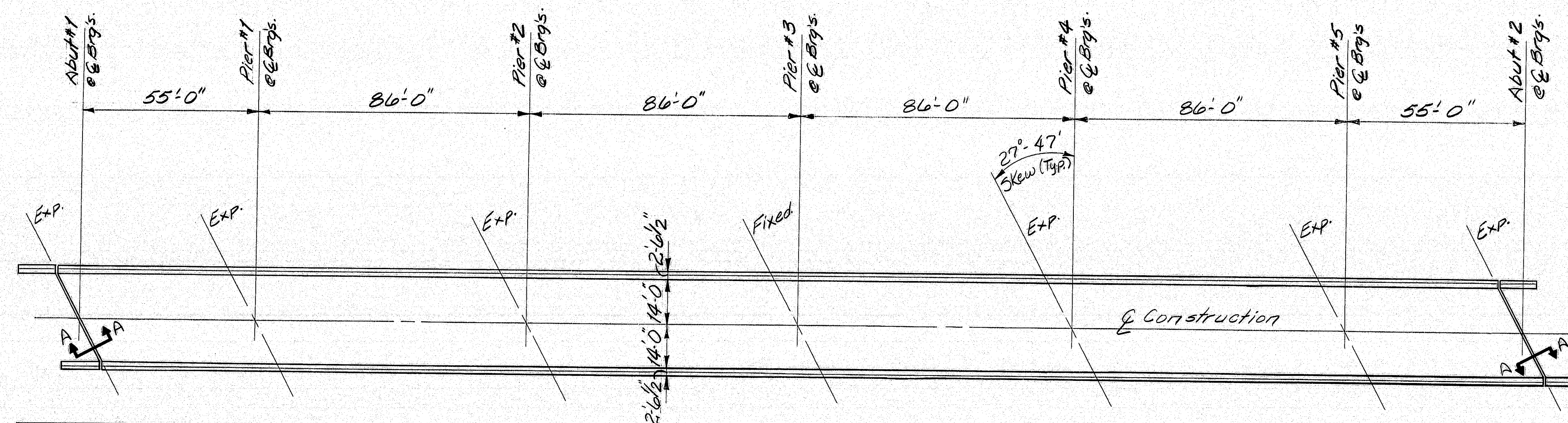
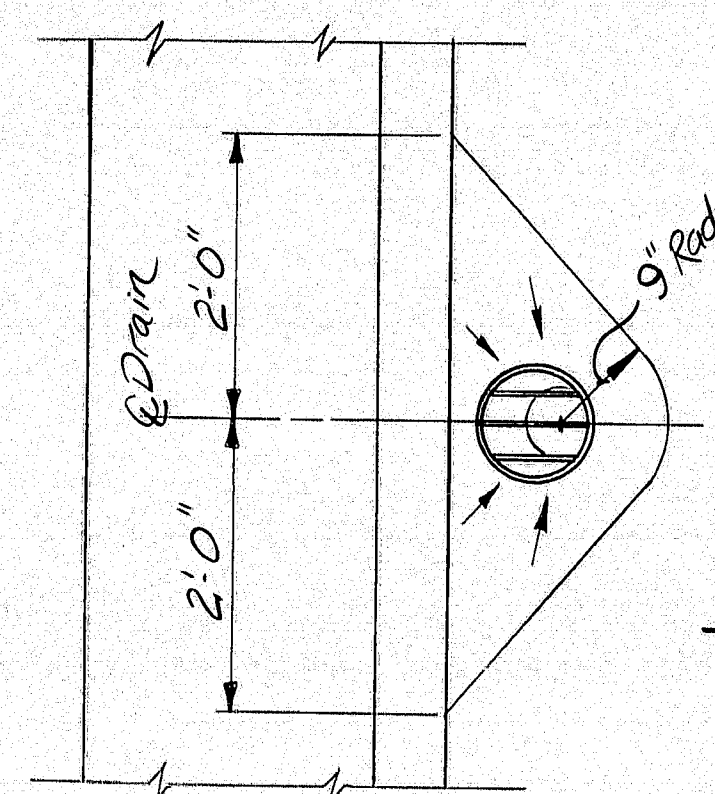


F.H.W.A. REG. NO.	STATE	PROJECT NUMBER	SHEET NO.	TOTAL SHEETS
1	MAINE	6061	1	1



TEMPERATURE ADJUSTMENT CHART											
Temp °F	0	10	20	30	40	50	60	70	80	90	100
Dim. Opening "A" at Abuts.	3"	2 3/4"	2 5/8"	2 3/8"	2 1/4"	2"	1 7/8"	1 5/8"	1 1/2"	1 1/4"	1 1/8"



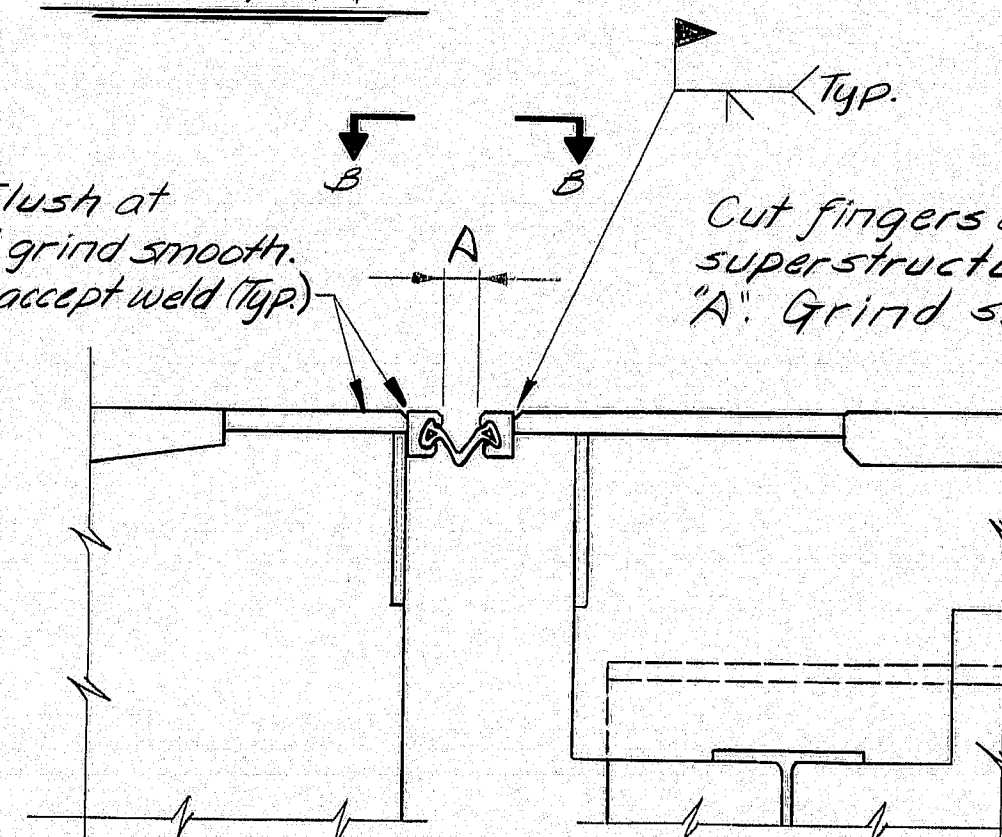
DRAIN DETAIL

NOTE:  
Depress wearing surface  
1/2" in the direction of  
the arrows

Cut fingers flush at  
Abutment and grind smooth.  
Bore 1" Hole to accept weld (Typ.)

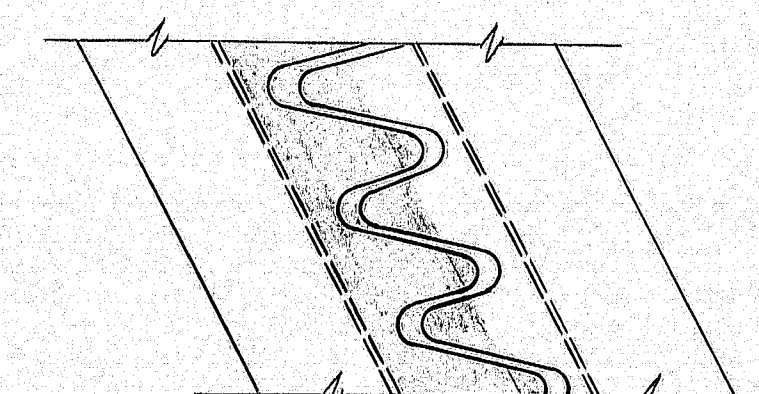
Cut fingers of joint on  
superstructure to meet dim.  
"A". Grind smooth.

PLAN



SECTION A-A

NOTE:  
Install a Gland  
Seal with  
Steel Extrusions



VIEW B-B

NOTE:  
Cut tips of fingers as  
shown in the shaded  
portions. Use these pieces  
to fill the gaps after the  
extrusions are in place.  
Sides must be cut parallel

#### BONDING GROUT NOTES

The deck surface must be thoroughly sandblasted and cleaned to remove all dust or loose materials immediately before bonding grout is placed.

Deck surface to be surface dry with no standing water in pockets or low areas when bonding grout is applied.

The bonding grout shall consist of equal parts by weight of Portland Cement and concrete sand with the plus #8 material removed and mixed with enough water to give a thick, creamy consistency.

Bonding grout to be evenly broomed onto the concrete surface ensuring that the entire surface, including face of curb to the finish grade of the wearing surface, is coated and that no excess grout collects in low spots or pockets. Grout shall be thoroughly broomed under and around reinforcing bars.

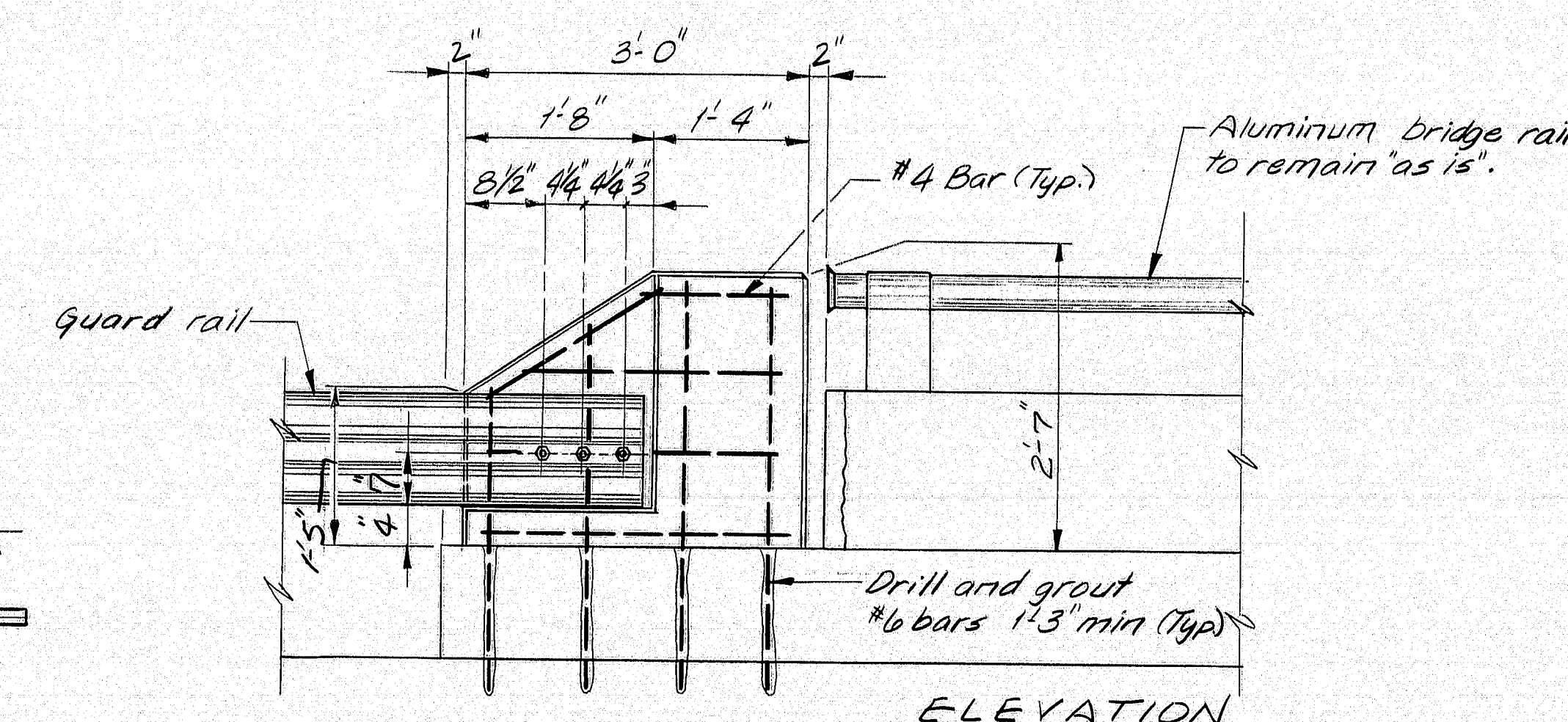
Rate of application must be controlled so that the grout does not dry before the new concrete is placed.

#### GENERAL NOTES

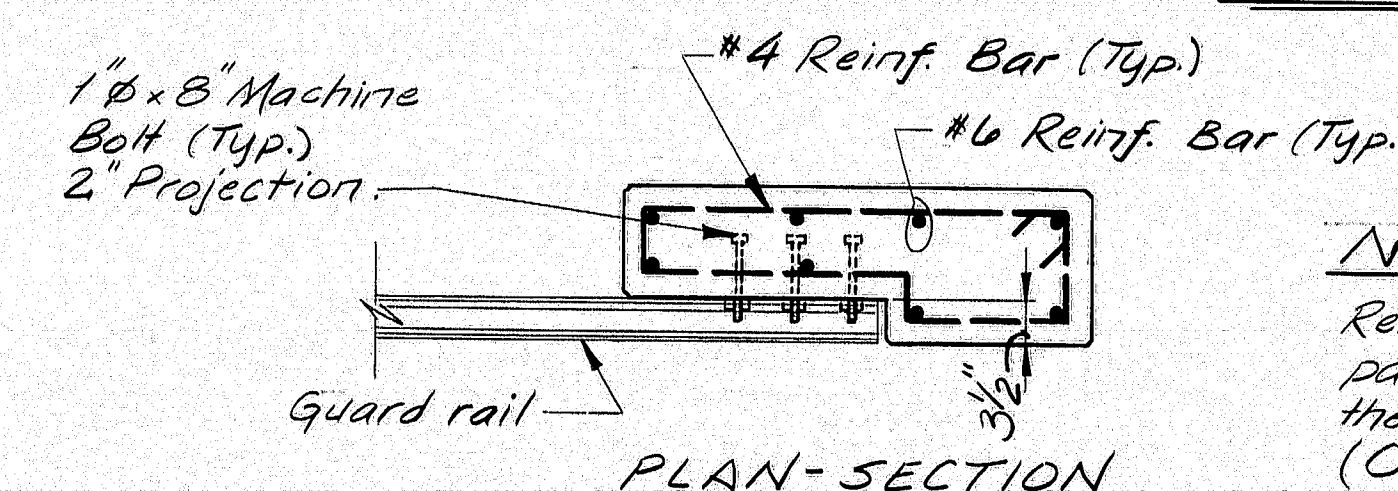
1. Remove existing wearing surface.
2. If main reinforcing steel is exposed, concrete should be removed under the steel to a depth of 1" minimum.
3. Blast clean the slab before any placement of bonding grout or concrete. Note: SLAB IS TO BE SURFACE DRY BEFORE PLACEMENT OF BONDING GROUT.
4. Broom on a layer of bonding grout just prior to placing concrete. See bonding grout notes this sheet.
5. Concrete to be cured using burlap and water.
6. Concrete to be Class AA and aggregate to be crushed ledge.
7. Minimum cover to be 2" unless otherwise noted.
8. Chamfer all exposed edges of concrete 1/4" unless otherwise noted.
9. Any exposed concrete shall be thoroughly cleaned before placing new concrete.

#### SCOPE OF WORK

Remove existing 2" Bituminous Wearing Surface and Membrane Waterproofing and install a 2 1/2" Bonded Concrete Wearing Surface. Seal joints at both ends of bridge. Replace endposts on the wingwalls. Field determine the length of guardrail needed.

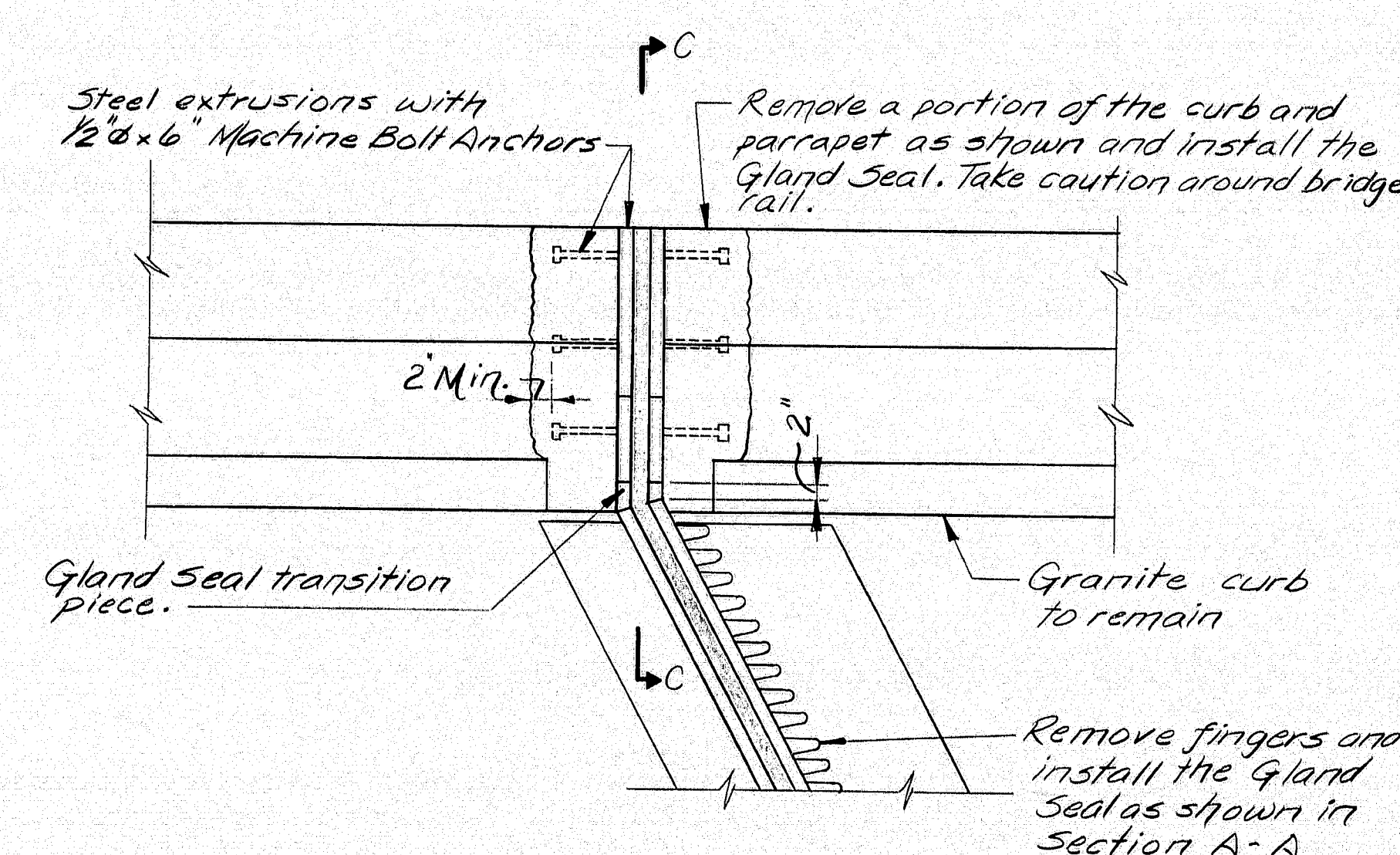


ELEVATION

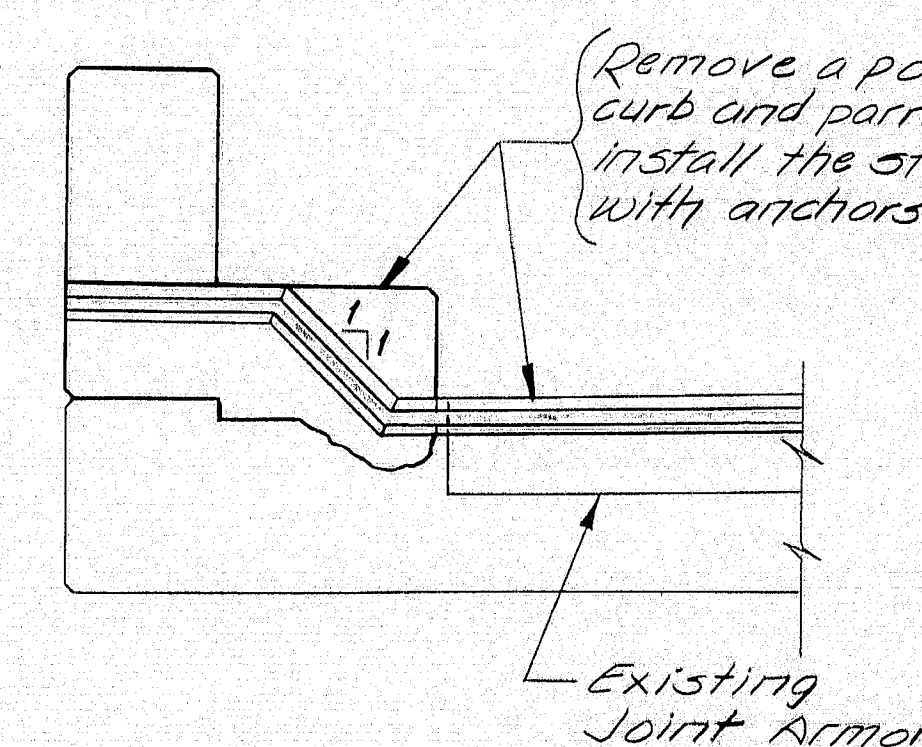


PLAN-SECTION

#### DETAIL OF THE NEW CONCRETE ENDPOST



TYPICAL JOINT AT CURB DETAIL



VIEW C-C

111-61

STATE OF MAINE  
DEPARTMENT OF TRANSPORTATION  
ROUTE 43 BRIDGE  
OVER  
INTERSTATE 95  
IN  
OLD TOWN  
PENOBSCOT COUNTY  
JOINT AND RAIL REPAIR  
SHEET 1 OF 1 AUGUSTA, MAINE

PROJECT DESIGN ENGINEER	DATE
BY L.S.B.	5-90
DESIGN-DETAILED	CHECKED
REVISIONS	FIELD CHANGES
PLANS	

65710-1  
BRUNING